



TEXAS  
Health and Human  
Services

# Connecting People, Services and Supports

---

**Providing Access to Cash, Food  
and Health Care Benefits**

# Session Objectives

1. Review services provided within Access and Eligibility Services specific to Community Access. We will also review how the Community Partner Program helps Texans meet their basic needs.
  
2. Review the following HHSC benefits to help Texans access assistance and benefits.
  - a. Health Care (Medicaid)
  - b. Food Benefits (SNAP)
  - c. Cash Help (TANF)

# Health and Human Services Commission (HHSC)



- HHSC offers a variety of services to help low-income individuals and families meet their basic needs.
  - Medicaid for families and children
  - Long-term care
  - SNAP food benefits and TANF cash assistance
  - Behavioral health services
  - Services to help keep people who are older or who have disabilities in their homes and communities
  - Services for women and people with special health needs
- The agency also oversees regulatory functions:
  - Licensing and credentialing long-term care facilities
  - Licensing child care providers
  - Managing the day-to-day operations of state supported living centers and state hospitals

# AES Organizational Structure and Senior Leadership Team



## **Wayne Salter**

Deputy Executive Commissioner for Access and Eligibility Services

### **Elisa Manor-Hendricks**

Associate Commissioner for Community Access

### **Todd Byrnes**

Associate Commissioner for Eligibility Operations

### **Mary Wolfe**

Deputy Associate Commissioner for Disability Determination Services

### **Julie Beisert-Smith**

Director of Business Operations and Support

### **Kim Bazan**

Deputy Director of Cross Division Coordination and Improvement

# Access and Eligibility Services (AES)



## Mission

Connecting ***People, Services*** and ***Supports***

# Access and Eligibility Services (AES)



## Vision

Provide an integrated and streamlined approach to connect individuals to services and supports that reduce institutionalization, allow individuals to remain in their communities, and promote economic and personal self-sufficiency.

# Community Access

Community Access is comprised of various programs to:



Empower and strengthen individuals and families by partnering with community and faith-based organizations, public and private entities.



Provide information, resources, benefits, and services.

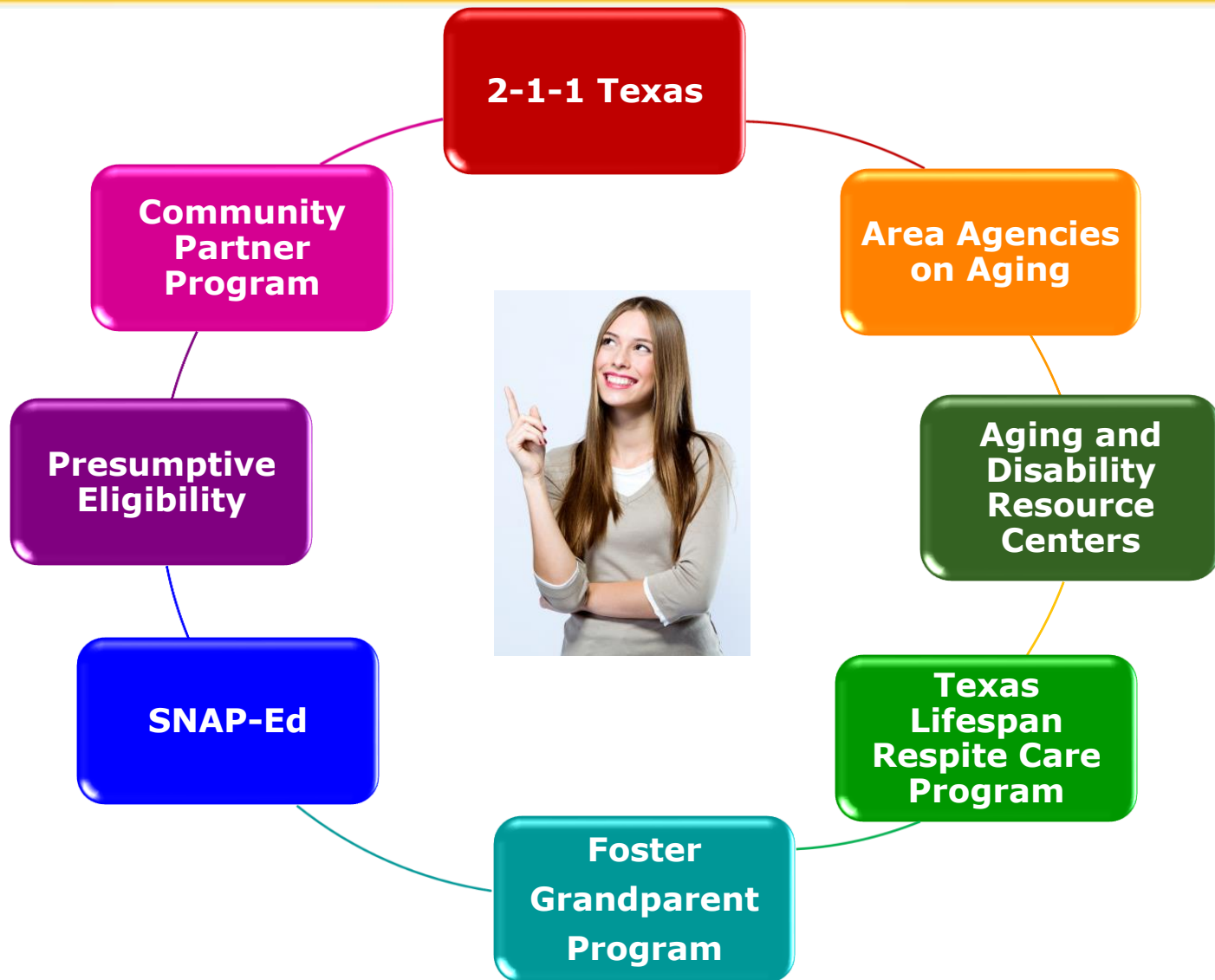


# Areas of Community Access

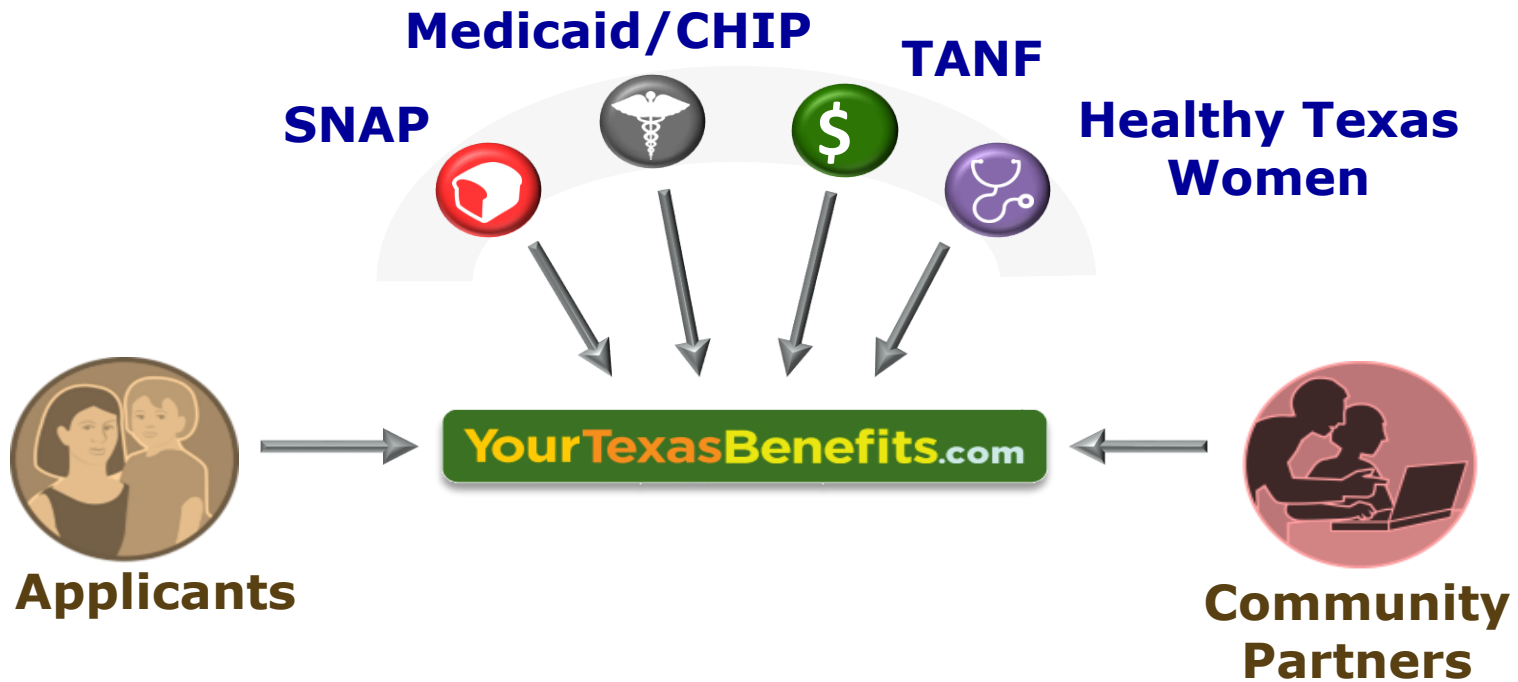




# Community Access Services



# Community Partner Program



- The application for benefits through [www.YourTexasBenefits.com](http://www.YourTexasBenefits.com) is dynamic.

# The Next Section will focus on:

- Health Care
- Food Benefits and
- Cash Help





# Food Benefits

Supplemental Nutrition Assistance Program (SNAP)  
Formerly known as the Food Stamp Program

- SNAP is a federally funded program to help low-income individuals and families buy nutritious food.
- SNAP eligibility is determined based on the following criteria:
  - Household
  - Residence
  - Citizenship
  - Age
  - Income
  - Resources
  - Expenses
- Most recipients are certified for a six-month period but the length of certification may vary.

# Expedited SNAP Benefits

- Eligibility for benefits is determined within one working day for emergency situations, such as:
  - Household income is under \$150 and liquid assets are \$100 or less.
  - Basic necessities (shelter and utilities) exceed income and assets.
  - Households that include migrant or seasonal farm workers with \$100 or less in liquid assets and very little income.
  - Active duty military households.

# SNAP - CAP

- Individuals age 50 or older, who receive SSI may qualify for a SNAP program designed especially for them, the Supplemental Nutrition Assistance Program- Combined Application Project (SNAP-CAP).
- SNAP-CAP is processed by specialized eligibility staff.
- The benefit period is 36 months.

# Cash Help

Temporary Assistance for Needy Families  
(TANF)



# TANF - Eligibility Criteria

TANF provides help to families with children who are deprived of support because of the absence, incapacity, or unemployment/underemployment of one or both parents.

Eligibility is based on the following:

- Relationship
- Age
- Social Security Number
- Citizenship or Alien Status
- Residence
- Assets
- Income
- Work registration

# TANF - Benefit Period

## Certification Period

- Most TANF households have a 6-month certification period.
- Child-only TANF families have a 12-month certification period.

## Time Limits

- TANF has a lifetime limit of 60-months per family
  - Benefits received as a child do not count against the 60-month limit if the child later qualifies as an adult.
- Texas adults subject to work requirements are limited to state time limits of 12, 24, or 36 months of benefits, depending on their work history and educational background

# Types of TANF

There are three types of TANF:

- TANF Basic - provides cash assistance monthly.
  - The amount of the grant is based on family size and income.
- One Time TANF - provides a lump sum payment of \$1,000.
  - One time does not mean one time ever, it means one time within a 12-month period.
- Grandparent TANF - provides a lump sum payment of \$1,000.
  - One time in a grandchild or grandparent's lifetime.
  - A grandparent is not eligible for additional money even if they take on additional children.

# Women, Infants, and Children (WIC)



- WIC helps pregnant, breast-feeding women and families with children younger than five, to buy healthy foods.
- This program provides the support and inspiration to eat right, have a healthy pregnancy, and breast-feed successfully. Those receiving Medicaid may qualify.
- [YourTexasBenefits.com](http://YourTexasBenefits.com) has a link for more information.

## WIC's benefits:

- Access to healthy food
- Nutrition counseling with nutritionists and dietitians
- Breastfeeding counseling with International Board Certified Lactation Consultants (IBCLCs)
- Referrals to other services



# Questions?



TEXAS  
Health and Human  
Services

# Thank You

---

## Community Partner Program