



TEXAS
Health and Human
Services

Texas Department of State
Health Services

TRAIN



Who We Are

Texas Department
of State Health
Services
(DSHS)

Health Emergency
Preparedness and
Response Section
(HEPRS)



TEXAS
Health and Human Services

Texas Department of State
Health Services

Who We Are

Health Emergency
Preparedness and
Response Section
(HEPRS)

Response and
Recovery

Preparedness



Total FTEs = 50
Total Vacancies = 11.5
Management to Staff Ratio = 1:10



TEXAS
Health and Human Services

Texas Department of State
Health Services

Who We Are

Emergency preparedness is the capacity of the public health and health care systems, communities, and individuals to prevent, protect against, quickly respond to, and recover from public health emergencies, particularly those whose scale, timing, or unpredictability threatens to overwhelm routine capabilities.

Such public health threats can include weather-related disasters, bioterrorism, chemical and radiation emergencies, and infectious disease outbreaks, such as pandemics.



TEXAS
Health and Human Services

Texas Department of State
Health Services

Who We Are



Preparedness Cycle

PLAN

Strategic & operational planning

ORGANIZE & EQUIP

Capital stock necessary to build capabilities

TRAIN

Provides public health professionals, first responders, security officials, emergency management officials, private and non-governmental partners with the knowledge, skills, and abilities needed to perform key tasks required by specific capabilities.

EXERCISE

Assess and validate plans

EVALUATE & IMPROVE

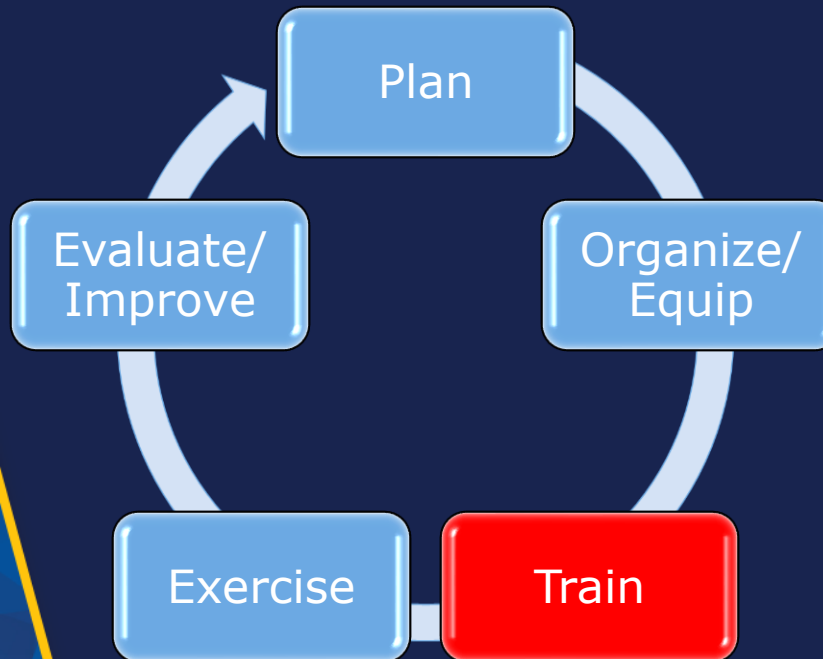
Corrective actions



TEXAS
Health and Human Services

Texas Department of State
Health Services

Who We Are



Preparedness Cycle

PLAN

Strategic & operational planning

ORGANIZE & EQUIP

Capital stock necessary to build capabilities

TRAIN

Provides public health professionals, first responders, security officials, emergency management officials, private and non-governmental partners with the knowledge, skills, and abilities needed to perform key tasks required by specific capabilities.

EXERCISE

Assess and validate plans

EVALUATE & IMPROVE

Corrective actions



TEXAS
Health and Human Services

Texas Department of State
Health Services

Who We Are

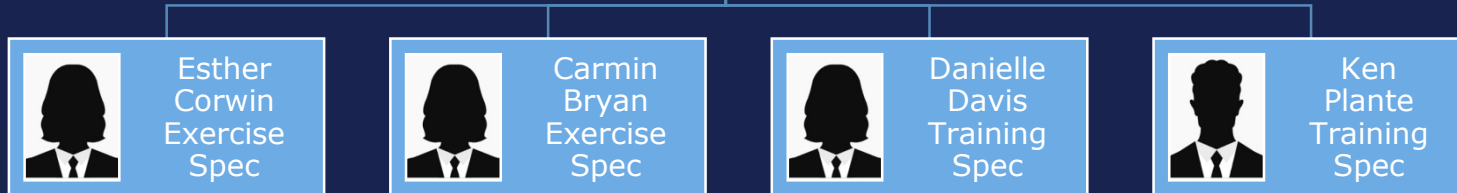
T&E VISION –
Prepare a
Healthy Texas



James Kelley
Team Lead



Marcus Franklin
TRAIN
Administrator



T&E MISSION - Provide innovative, informed, and aligned training and exercises to optimize Texas public health and medical response to disasters, disease threats and outbreaks while advancing DSHS SMOC/RHMOC readiness



TEXAS
Health and Human Services

Texas Department of State
Health Services



TEXAS
Health and Human
Services

Texas Department of State
Health Services

What is TRAIN?

**TrainingFinder Real-time
Affiliate Integrated Network**



Public Health Foundation



Healthy Practices. Health People. Healthy Places

Shared Values

- PHF was created with certain intrinsic core values. The organization carries out its activities and programs with these values foremost in mind.
- Improving the public's health
- Health equity and social justice
- Interdisciplinary perspectives and practice
- Consensus and partnership building
- Innovation and idea-driven solutions
- The use of evidence and data to improve performance
- Our connectivity to the public health community
- The competence of our people and the quality of our work



TEXAS
Health and Human Services

Texas Department of State
Health Services

Training Opportunities

**Carol Moehrle – Idaho North Central District
Director**



TEXAS
Health and Human Services

Texas Department of State
Health Services



TRAIN

3 Components

- Affiliates
- Course Providers
- Learners



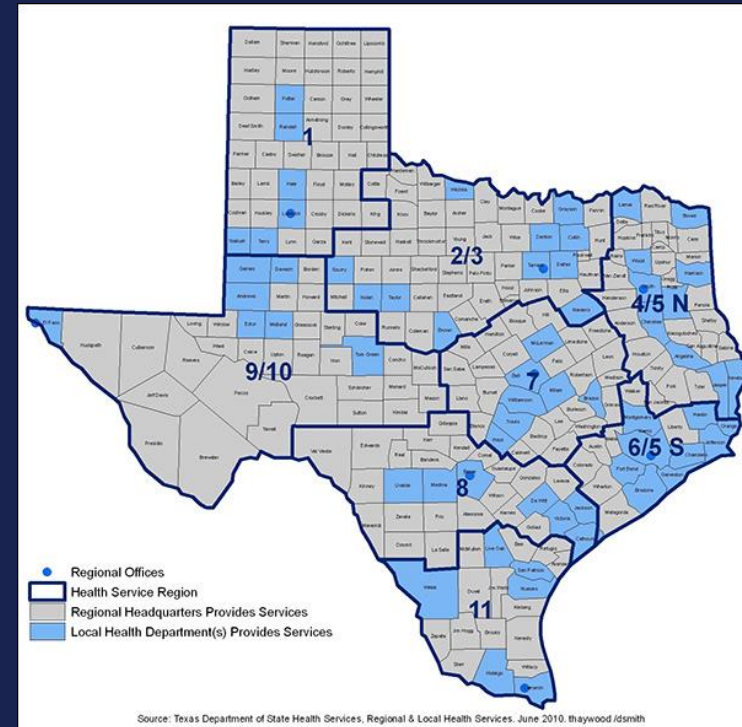
TEXAS
Health and Human Services

Texas Department of State
Health Services

What is an Affiliate?

Texas Department of State Health Services

Any organization - such as a state public health agency, regional training center, or professional association - that purchases and is responsible for managing a customized website that is part of the TRAIN Learning Network (TRAIN).



TEXAS
Health and Human Services

Texas Department of State
Health Services



TEXAS
Health and Human
Services

Texas Department of State
Health Services

Affiliate Benefits

TRAIN Benefits Affiliate Members...



Share and collaborate around training needs



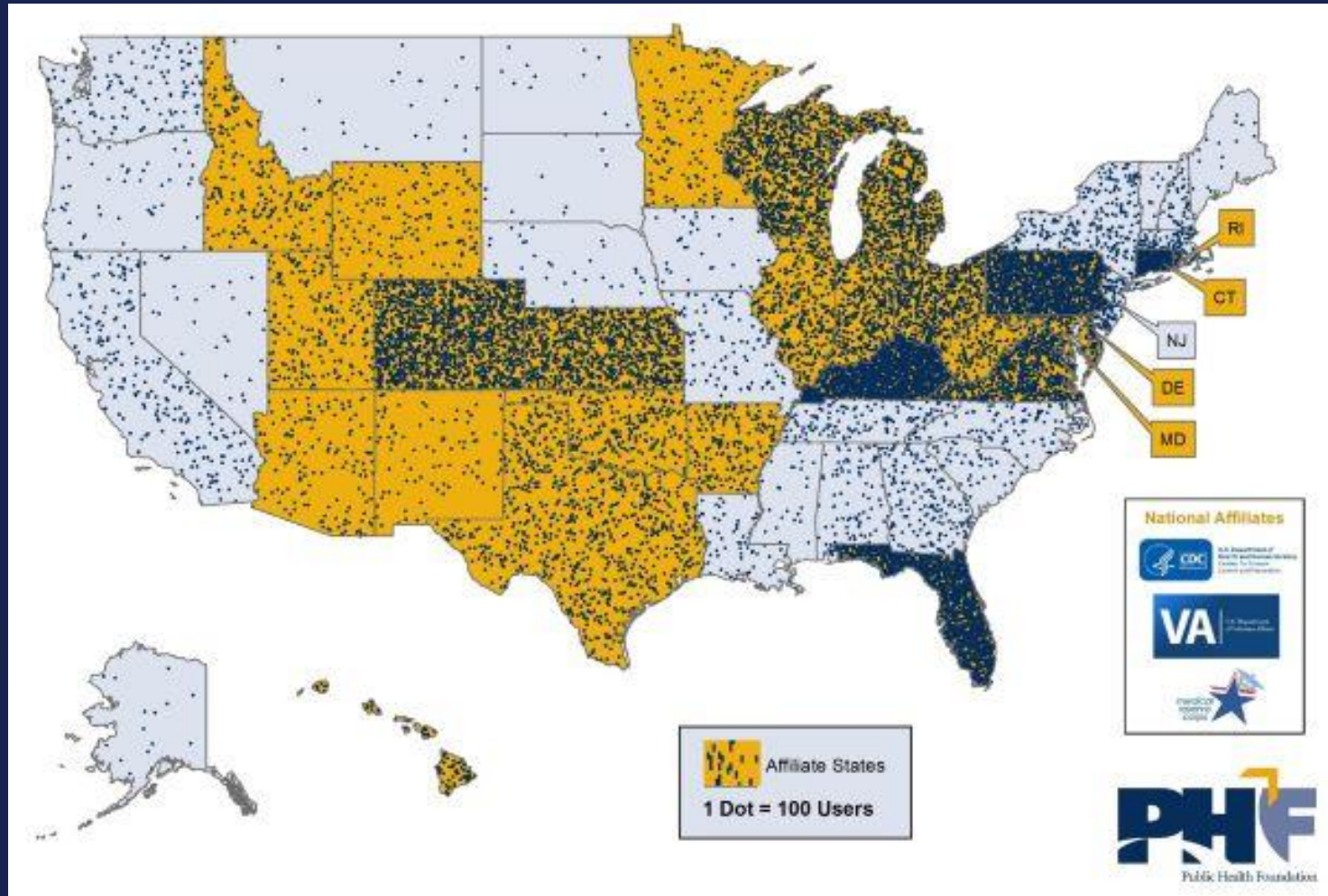
Shape direction and expansion of the TRAIN learning network



Administrative access to deliver and track trainings, including content from TRAIN's national catalog

-
- 29 Affiliate Agencies
 - 26 state health and preparedness agencies
 - 3 federal agencies
 - The Centers for Disease Control and Prevention (CDC)
 - Medical Reserve Corp (MRC)
 - Veterans Health Administration (VHA)

Affiliate Map



TEXAS
Health and Human Services
Texas Department of State
Health Services



A Closer Look

Monthly TRAIN Stats(As of September 1, 2018)

Active users :	1,757,272
Approved course providers:	4,066
Available Courses:	14,531
Course Provider Organizations:	2,956

For the period of September 1 - September 25, 2018 for TRAIN.org (overall figures for all TRAIN sites):

Number of visits to the site:	218,757
Number of unique visitors:	75,975
Total page views:	4,068,010
Countries accessing TRAIN:	172

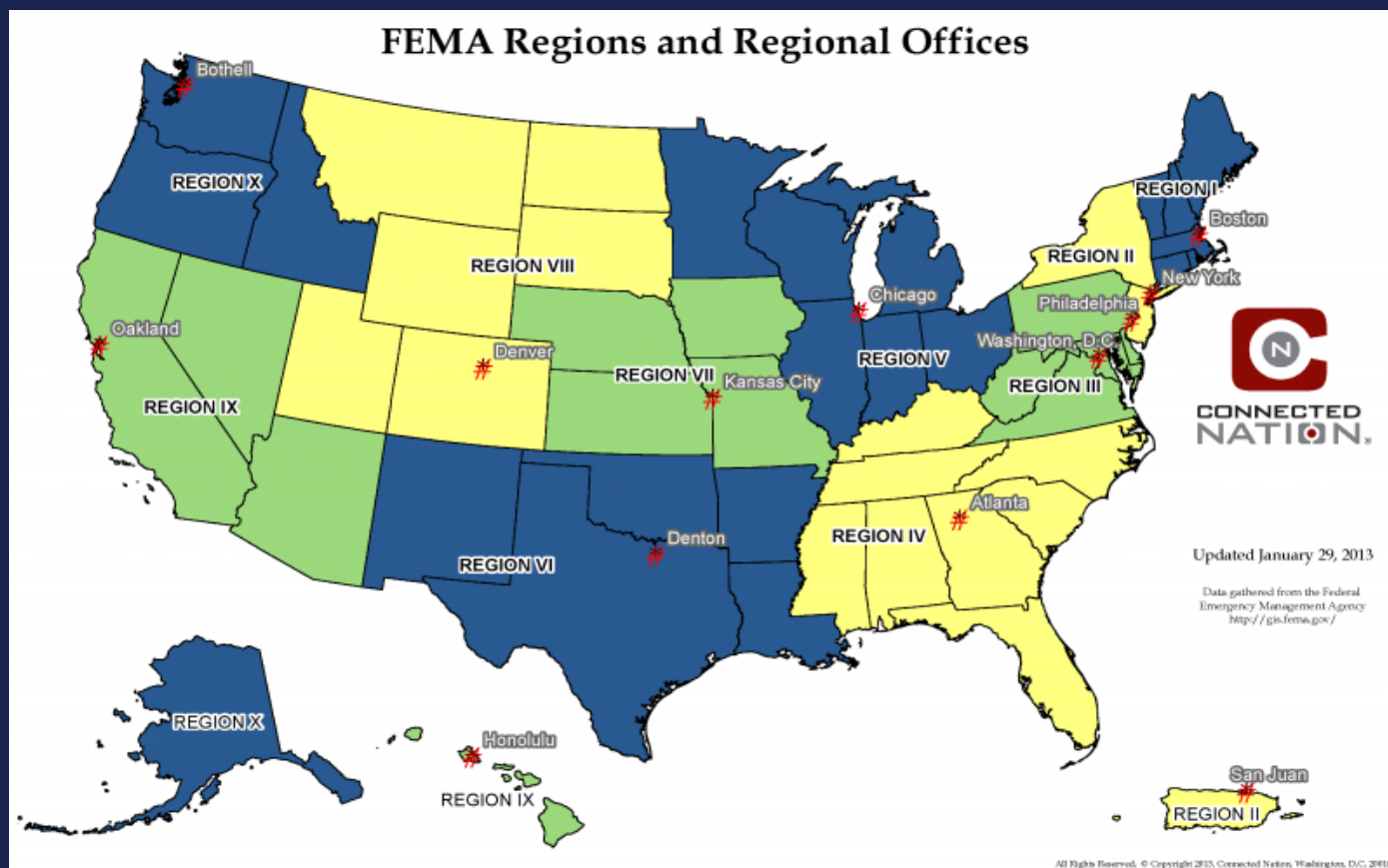


TEXAS
Health and Human Services

Texas Department of State
Health Services

Region VI TRAIN Workgroup

T.A.L.O.N



TEXAS
Health and Human Services

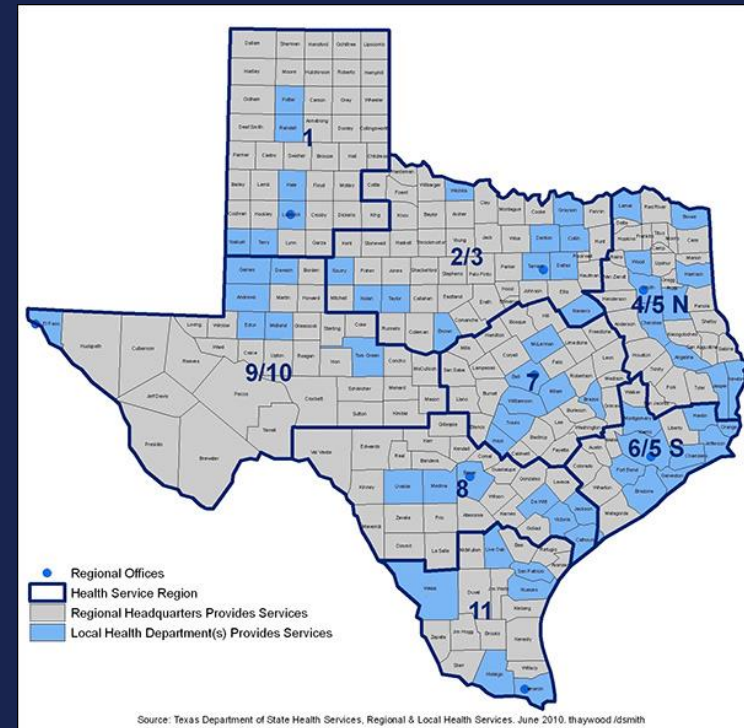
Texas Department of State
Health Services

What is a Course Provider?

Texas

Any public or private organization that delivers training and registers to submit their organization's training programs on national or Affiliate TRAIN site.

The course provider and its courses are subject to administrator approval.



TEXAS
Health and Human Services

Texas Department of State
Health Services



TEXAS
Health and Human
Services

Texas Department of State
Health Services

Course Provider Benefits





TEXAS
Health and Human
Services

Texas Department of State
Health Services

Course Provider Benefits



TRAIN Benefits Course Providers...



List and manage courses
on TRAIN at no cost



1.5 Million

Expand the reach of courses
to over 1.5 million learners



Share content and
identify gaps

About 25% of the content offers CEs

Much of the content is aligned with national standards such as the Core Competencies for Public Health Professionals, Public Health Preparedness (PHEP) Capabilities, and Healthcare System Preparedness (HPP) Capabilities.



TEXAS
Health and Human
Services

Texas Department of State
Health Services

Organizations

3.0 Upgrade



TEXAS
Health and Human
Services

Texas Department of State
Health Services

TRAIN Learner Benefits



HOME

COURSE CATALOG

YOUR LEARNING

CALENDAR

RESOURCES


DISCUSSIONS

ADMIN

HELP



Hot Topics

 [Texas Infectious
Disease Readiness](#)

 [Zika in Texas](#)

Search

 [Courses](#)

 [Training Plans](#)

 [Events](#)

Your Training Status



7 COURSES
TO COMPLETE



1 TRAINING PLAN
IN PROGRESS

8
Certificates Obtained

Your Recent Courses



Courses You May Also Like





HOME

COURSE CATALOG

YOUR LEARNING

CALENDAR

RESOURCES

DISCUSSIONS

ADMIN

HELP

Search TRAIN



Use this page to search for any course or document on the TRAIN Learning Network site. The results may be limited by any groups you have joined within TRAIN ([see your profile for details](#)).



Sort by relevance



Filters

Search By



Any Search By

Courses

Affiliate



Format



Subject



4,406 record(s) found.

Courses x

["Reading" Victims & Judging Credibility - Best Practices in Promoting Victim Centered Investigations & Prosecutions Webinar](#)

Webstream/Archived Webcast



End Violence Against Women

★★★★☆ (3 Ratings)


[#NYCHealthEquity - Advancing Racial and Social Justice](#)

Webstream/Archived Webcast



Region II Public Health Trainin

★★★★☆ (169 Ratings)

 [#RelationshipGoals: Significant Others in Women's Recovery \(NAADAC or NBCC Credit\)](#)

Webcast (recorded)



[VDH: Human Papillomavirus: 2018 Pink Book Webinar Series](#)

Webcast (live event)

OEPI

★★★★☆ (5 Ratings)

[KDHE: Associate, Contractor, and Vendor, IT Security Awareness Refresher Training - 2017 & 2018 \(1068735\)](#)

Web-based Training - Self-study

IT

★★★★☆ (1579 Ratings)

[Immunization: You Call the Shots-Module Sixteen-Vaccines for Children Program - 2018 \(Web-based\) - WB2898](#)

Web-based Training - Self-study

CDC

★★★★☆ (454 Ratings)

[Immunization: You Call the Shots-Module Ten-Storage and Handling - 2018 \(Web-based\) - WB2897](#)

Web-based Training - Self-study

CDC

★★★★☆ (510 Ratings)

[Crisis and Emergency Risk Communication \(CERC\) Calls - Atlanta, GA - May 1, 2018 \(Web on Demand\) - WD4027-050118](#)

Webcast (recorded)

CDC

★★★★☆ (4 Ratings)



Learner Benefits

Courses Geared Toward Your Profession

- Epidemiologists
- Public health officials
- Health educators
- Environmental health professional
- Administrators / Managers
- Social workers
- Nurses, physicians, other clinicians
- Emergency responders
- Military personnel
- Mental health providers
- Government and community leaders



TEXAS
Health and Human Services

Texas Department of State
Health Services

Learner Benefits

Find Up-To-Date Courses on a spectrum of public health issues.

- Opioids
- Overweight and obesity
- Zika Virus
- Health communications
- Depression
- Terrorism/Emergency Readiness



TEXAS
Health and Human Services

Texas Department of State
Health Services

TRAIN Benefits Learners...



Learners can register on TRAIN at no cost



Thousands of courses available in multiple formats



Curricula and continuing education available on a variety of topics

More than **1.5 million** public health, healthcare, and preparedness professionals from all US states and territories, as well as 177 other countries are registered users on TRAIN.



TEXAS
Health and Human
Services

Texas Department of State
Health Services

New & Improved TRAIN 3.0



TEXAS
Health and Human
Services

**Texas Department of State
Health Services**

How It Works

#1

Groups

- Automated group management will join users to groups based on information contained in their user profile. Users are assigned the necessary administrative permissions and will instantly inherit course enrollments from their new groups and gain access to restricted course catalogs.



TEXAS
Health and Human Services

Texas Department of State
Health Services



#2

Administrative Functions

Over 36 different Administrative functions to allow you full control

- Reports Manager
- Course Registration Approval Manager
- Course Attendance Manager
- Assessments & Evaluation Manager
- Batch Registration Manager
- Training Plan Manager
- Duplicate Accounts Manager



TEXAS
Health and Human Services

Texas Department of State
Health Services

Training Plans

A collection of vetted courses designed to address specific gaps in knowledge, skills and competence.



TEXAS
Health and Human Services

Texas Department of State
Health Services

Training Plans

National Training Plans

- [Basics of Public Health Preparedness](#)
- [CDC Public Health 101 Training Plan](#)
- [Community Health Assessment & Improvement Planning](#)
- [Disaster Information Specialist Program – Advanced](#)
- [Disaster Information Specialization – Basic Level](#)
- [E is for Epidemiology](#)
- [Environmental Public Health Online Courses \(EPHOC\)](#)
- [Foundations of Public Health Preparedness](#)
- [Health Literacy for Health Professionals](#)
- [Infection Prevention and Control for US Healthcare](#)
- [Medical Reserve Corps Epidemiology Training](#)
- [National STD Curriculum](#)
- [PCSS-O Pain Curriculum: Strategies for Providers](#)
- [Training Tools for Health Schools](#)
- [Vector Control for Env. Health Professionals](#)
- [WIC Learning Online](#)
- [Women’s Integrated Systems for Health \(WISH\)](#)



TEXAS

Health and Human Services

Texas Department of State
Health Services

Reports

Made Easy

- Generate reports by choosing from 100+ data fields (including all SCORM tracking data and custom user defined fields). Control logic-based filters to see only the data needed. Save report templates and export your reports to Excel (.csv file) for additional manipulation and formatting. Schedule all reporting to be done automatically at specified intervals



TEXAS
Health and Human Services

Texas Department of State
Health Services



Interested?



TEXAS
Health and Human Services

Texas Department of State
Health Services

Marcus Franklin

Marcus.Franklin@dshs.texas.gov

512-776-7336



TEXAS
Health and Human
Services

**Texas Department of State
Health Services**

Thank you

Marcus Franklin

Marcus.Franklin@dshs.texas.gov

James Kelley

James.Kelley.@dshs.texas.gov